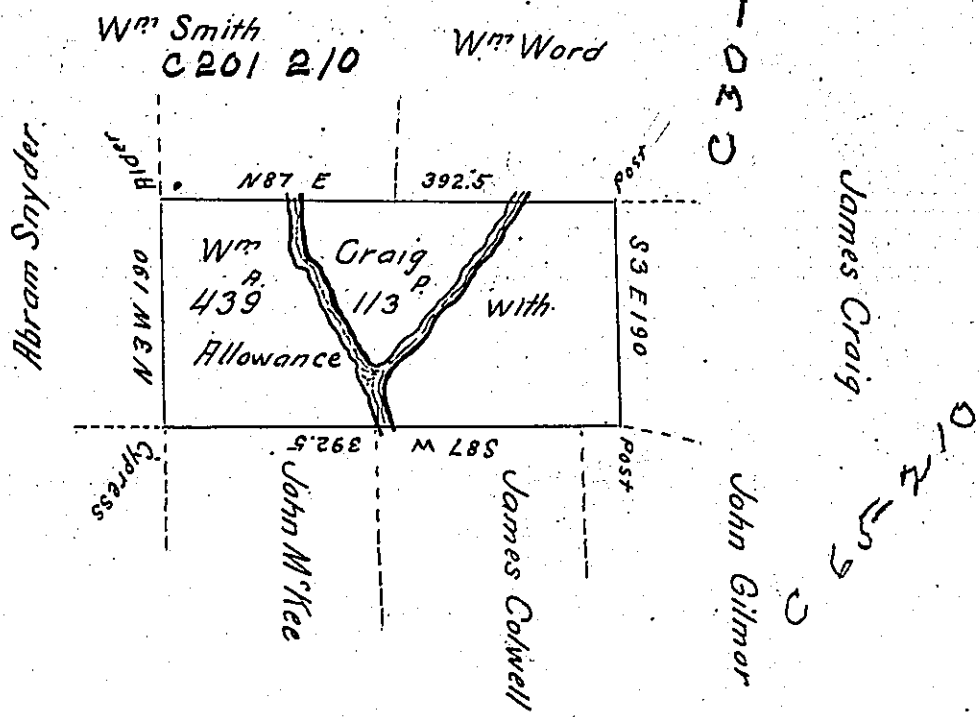


P-12-36



Situate in Wolf creek township Mercer County on Wolf creek Containing four hundred and thirty nine Acres and one hundred and thirteen perches with Allowance Surveyed March 19th 1803 in pursuance of a warrant Granted to William Craig Dated the 14th Day of February 1803 Survey'd by me.

John Findley D.S.

To Samuel Cochran Esq^r S.G.

IN TESTIMONY that the above is a copy of the original remaining on file in the Department of Internal Affairs of Pennsylvania, made conformably to an Act of Assembly approved the 16th day of February, 1833, I have hereunto set my Hand and caused the Seal of said Department to be affixed at Harrisburg, this nineteenth day of April 1904

George P. ...
Secretary of Internal Affairs.